

LDAP ADMIN GUIDE FOR NOVELL® eDIRECTORY™ ENVIRONMENTS



CYMPHONIX™
Network Composer™

Introduction

This guide is targeted at system administrators who use Novell® eDirectory™ and the Novell Client to authenticate users on their network. If you use Active Directory, please refer to the Active Directory guide located in the Support Downloads section of the Cymphonix website at <http://www.cymphonix.com/>. Alternately, if you use a different LDAP server than the ones we have mentioned, consult the Special Notes section. With the Version 6 release, Network Composer now has the ability to work with LDAP servers to identify users and their data using existing profiles. The LDAP integration is created by running a client application (cymphonixnds.exe) during the logon process. The script then stays active on the client PC during the session and records the user's information in conjunction with the policies the Network Composer administrator has set. Cymphonixnds.exe needs only to be available on the network, not necessarily located on each workstation. By making a modification to the NDS mappings of the LDAP group, placing the cymphonixnds.exe file in an appropriate location, and modifying a user's login script, you will enable the Composer's LDAP capabilities. The Cymphonix LDAP integration currently only works on client workstations running the Microsoft® Windows® operating system. Note: For instructions on installing the Cymphonix LDAP client in LDAP environments other than Novell® eDirectory™ or Microsoft® Active Directory®, please see the Special Notes section.

For this install, you will need:

- An account with at least browse rights to the eDirectory context your users are in
- Access to the Novell™ ConsoleOne eDirectory™ management tool. (Recommend version 1.3.6 or better)
- An installed Cymphonix Network Composer
- The IP address and Administrator User Name and Password for the Cymphonix Network Composer

Step 1

Download Cymphonix eDirectory LDAP Client, cymphonixnds.exe

This file is available for download using your Composer's download menu.

Step 2

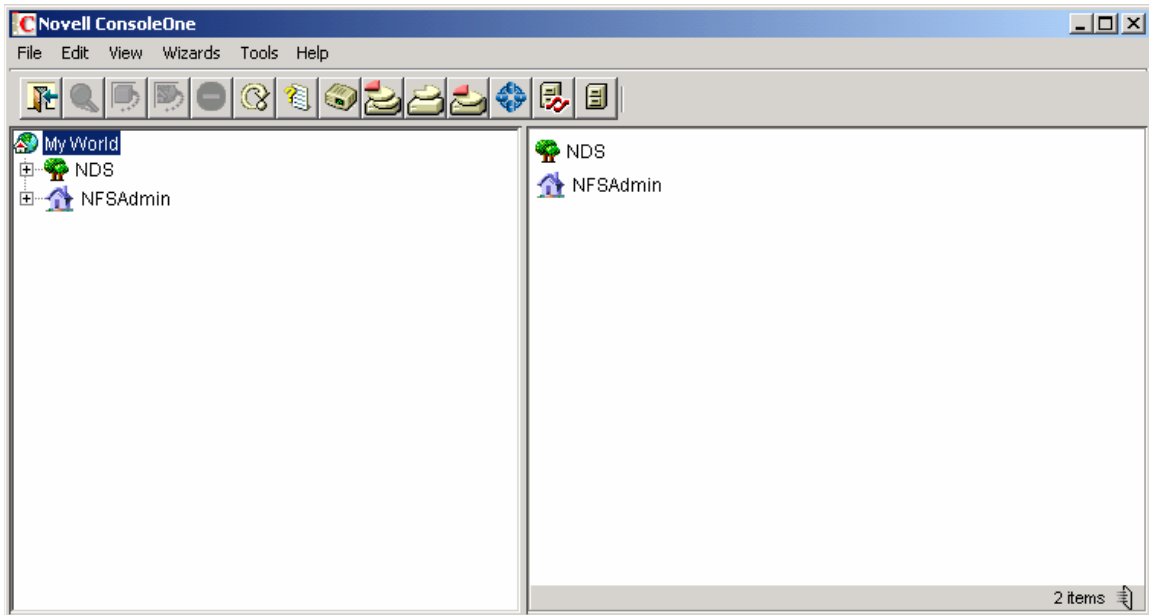
Log Into Your LDAP Administration Program

Note: The screen shots pictured in this guide are set for Novell™ eDirectory™ as represented in ConsoleOne
In this step, we will set the LDAP server group to export the NDS attribute "Full Name" as the LDAP attribute, "displayName"

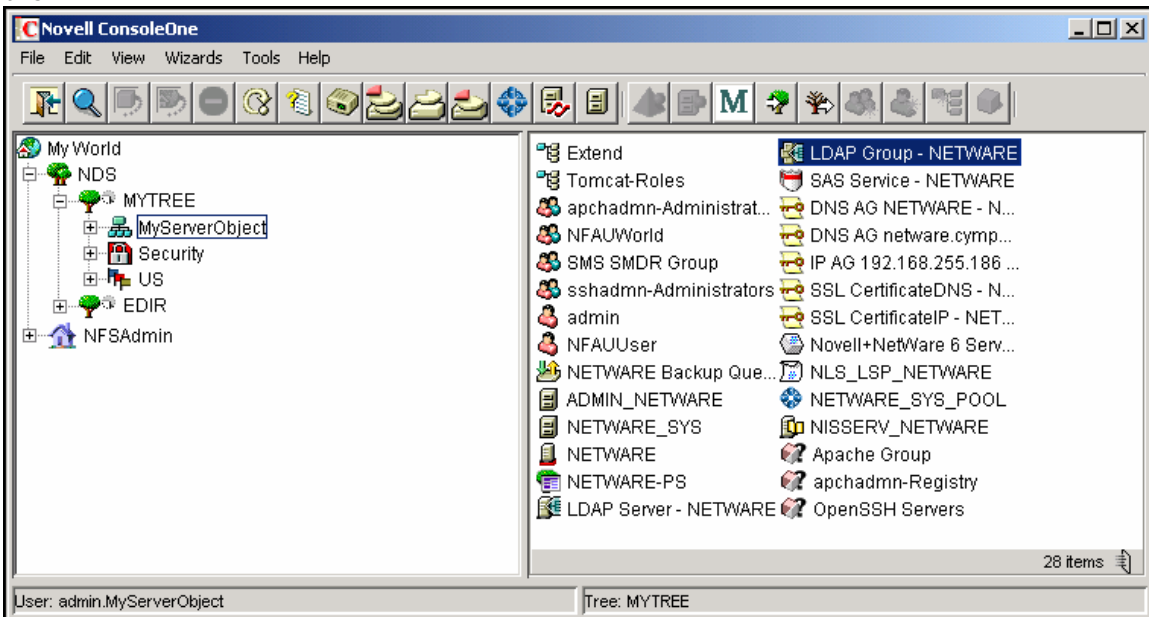
- Run Console One (Usually located at Z:\mgmt\
ConsoleOne\1.2\bin\ ConsoleOne.exe if your
Netware "Public" share is mapped, or
C:\novell\consoleone\1.2\bin if you have installed it
locally)



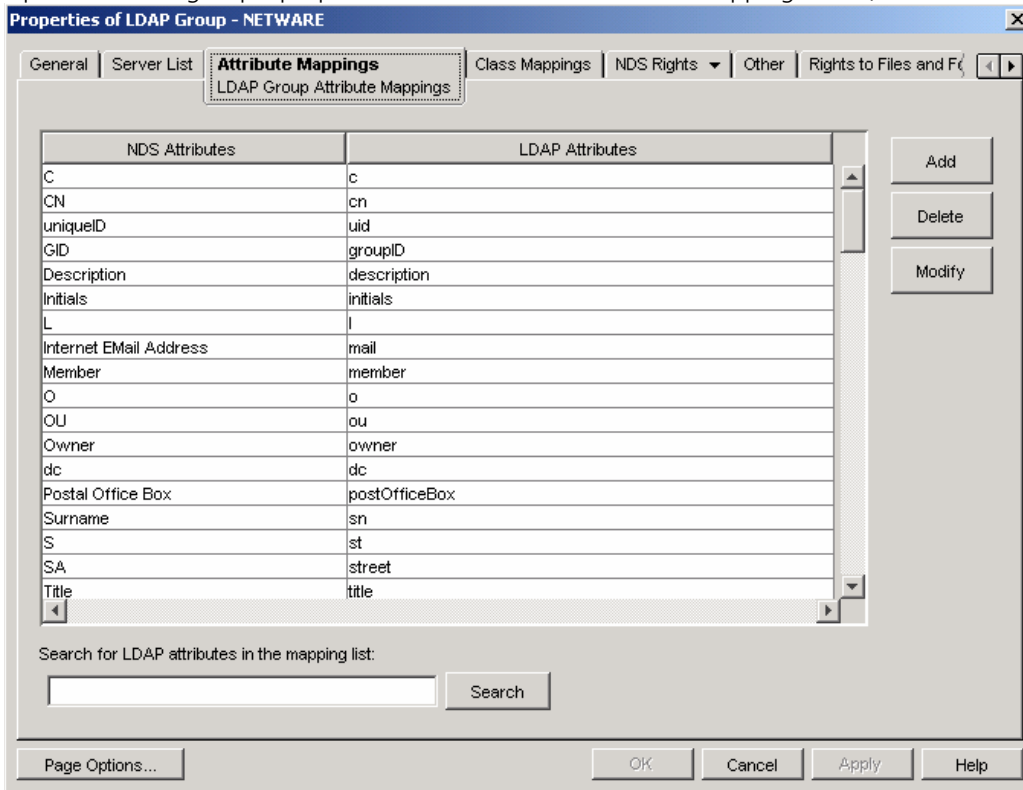
Your Screen should now look like this:



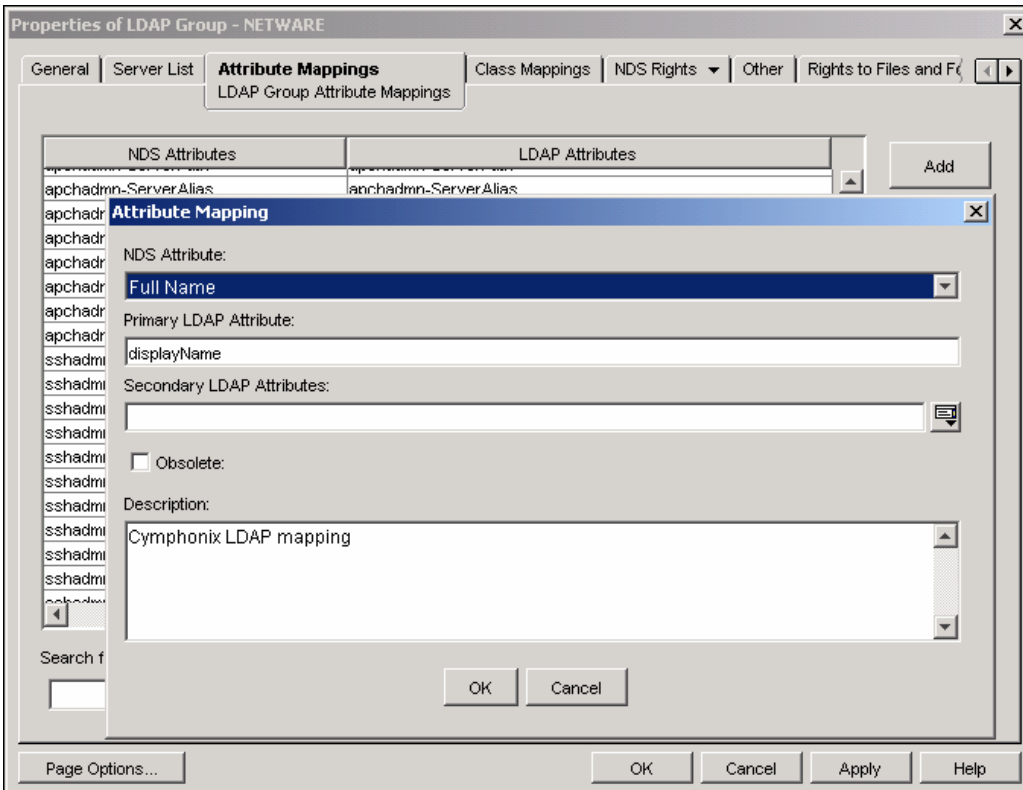
Now browse to the object containing your LDAP Group(s). This was set by the System Administrator when your Tree was installed. It is probably in the same context as your admin user. It should look like this:



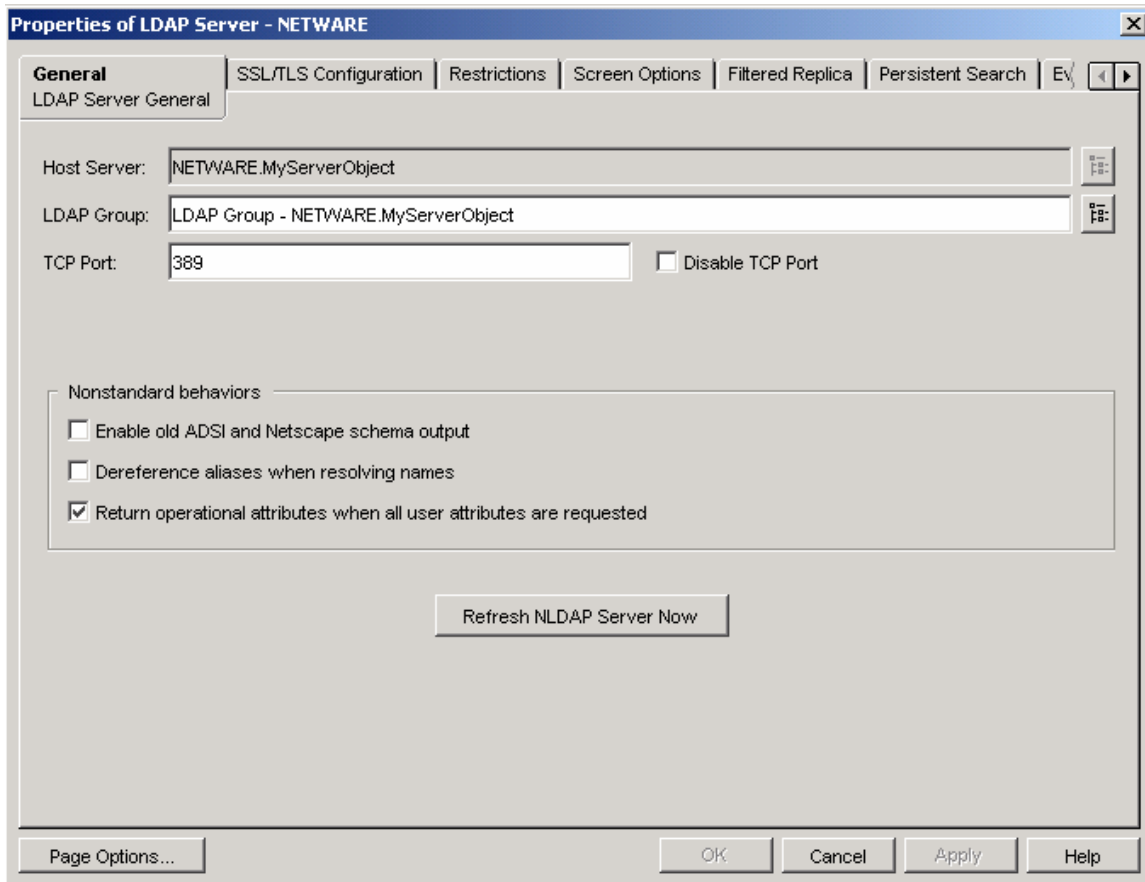
Open the LDAP group's properties and chose the "Attribute Mappings" Tab, like this:



We will Add a new mapping that links the LDAP Attribute "displayName" to the NDS Attribute "Full Name".



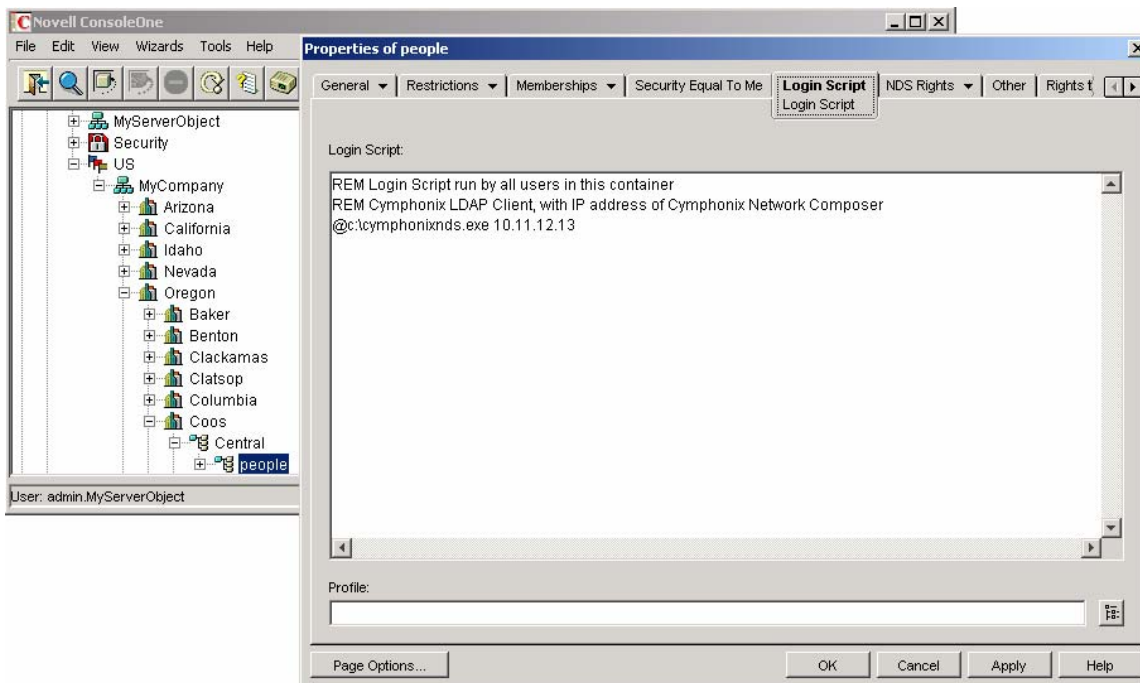
Now that we have created the mapping, it is necessary click "OK", and then to refresh the NLDAP server. Double click the LDAP Server with the same name as the LDAP Group, and in the General Tab, click "Refresh NLDAP Server Now"



Step 3

Add the Cymphonix eDirectory client to the users' login script

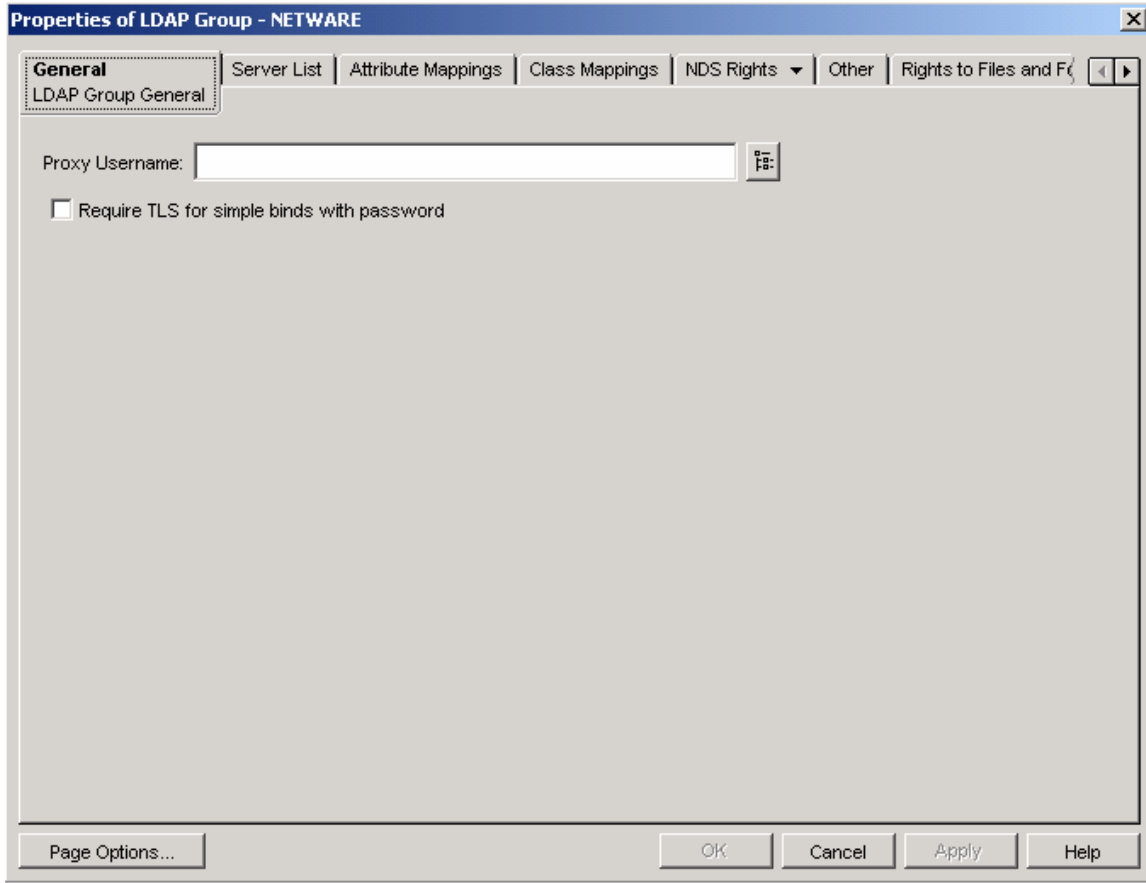
Now, we need the users to run a client when they log in. This example uses an Organizational Unit to set a common Login Script for all the users in it. Cymphonixnds.exe should be executed with the IP address of the network composer as the only command line argument.



Now, copy `cymphonixnds.exe` to a location where the script can get access to it. This could be on a Netware Server with a mapped drive, network attached storage, or the local workstation. (Just make sure the path used in the Login Script is consistent with the location you choose).

Notes:

1. Depending on your LDAP settings, eDirectory could be requiring TLS for simple binds. This will prevent the Network Composer from retrieving user data. To allow the Network Composer to make LDAP Queries, open the properties of the LDAP group and verify "Require TLS for simple binds with password" is unchecked:



© Cymphonix Corporation. All rights reserved

Cymphonix Corporation
8871 S. Sandy Parkway, Suite 150
Sandy, Utah 84070
866-511-1155
www.cymphonix.com

DOC-LDP-0630-1.1