

# Cymphonix Network Conductor



Cymphonix® Network Conductor™ is the centralized management and reporting appliance for organizations with multiple sites or Internet connections. By providing a single centralized interface for multiple Cymphonix Network Composer® EX appliances, Network Conductor improves visibility and dramatically streamlines reporting and policy management across an organization.

## GET BETTER VISIBILITY WITH AMAZING REPORTING:

The award-winning reporting interface of the Network Conductor delivers unprecedented access to critical network information—from broad summary reports to highly granular details—converting data to actionable knowledge. With Network Conductor, you'll be able to:

- Actively view and analyze Internet and WAN traffic from individual Network Composers or groups of Network Composers that are distributed across an organization's network
- Set up automated reports to notify key individuals about network activity
- Access real-time reports and historical views
- Create reporting by zone, device, organization, department, group, or user
- Correlate data to determine patterns and trends

## NETWORK CONDUCTOR PRODUCT OVERVIEW:

Create and deploy Internet policies using Network Conductor across multiple EX Network Composers to ensure maximum effectiveness of resources.

**User Interface:** Use an enhanced version of the award-winning Network Composer interface to report and control multiple EX Network Composer appliances.

**Centralized Reporting:** Provide a centralized tool to review network details across 5-100 EX Network Composers. Correlate data by appliance, zones, locations or users across the network.

**Centralized Policy Management:** Create policies in one location and push them to all deployed EX Network Composers. Generate reporting and analysis based on a wide range of options from sites to groups, to individuals—regardless of location.

**Delegated Administration:** Delegate local visibility and policy management to on-site IT personnel through your Network Composer array.

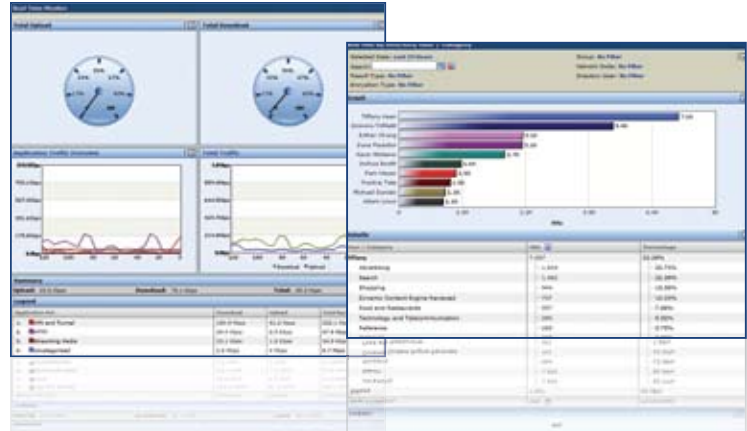
**Hardware:** 64 Bit architecture using Intel® Dual-Core or Quad-Core processors. Network Conductors are capable of supporting from 5 to 100 EX Network Composers depending on the model. Connection is via a gigabit Ethernet.

**HDD:** Hard drive options range from a 500 MB single drive in the EC300 to 7 TB via eight HDDs in RAID 5 configuration in the EC700. Network Conductor can scale to accommodate the information you need.

**Memory:** Starting at 4 GB with a maximum of 12 GB, Network Conductor has powerful memory options to operate complex reporting tasks quickly and efficiently.

### THE RIGHT INFORMATION TO THE RIGHT PEOPLE

Give your department leaders visibility into their business areas, empowering them to improve productivity and minimize threats. HR managers can monitor for appropriate Internet usage. IT groups can scan for vital WAN statistics. The CIO can stay on top of Internet optimization and security.



## Network Conductor Configurations

Network Conductor is available in three different models to accommodate the size of your organization and the number of EX Network Composers you have installed.

Model	CPU	Memory	HDD Capacity	HDD Redundancy	Managed Appliances
EC300	1 x Intel® Dual Core	4 GB	500 GB	None	up to 5 EX Series Network Composers
EC500	1x Intel Dual Core	8 GB	3 TB	RAID 5	up to 25 EX Series Network Composers
EC700	2x Intel Dual Core	12 GB	7 TB	RAID 5	up to 100 EX Series Network Composers

### HIGHLIGHTS:

- 3 models available for different network sizes
- 64 Bit high performance processors with memory and storage to satisfy compliance needs
- Centralized management and reporting for multiple Network Composers deployed in a central distributed environment.

## Professional Services

Cymphonix and our resellers offer services and trainings to support you in ways that meet your unique needs. Whether you are deploying a large, multi-site, international organization or using IT consultants to complement your current IT infrastructure, or installing an appliance yourself, we are here to assist you.

- Robust Training Modules
- Configuration and Installation Consulting
- System Assessment and Optimization Consulting
- 24x7 Premiere Support Package

## About Cymphonix

Cymphonix develops Secure Web Gateway solutions that give organizations complete visibility into their networks, enabling them to optimize traffic and eliminate threats. Innovative and award-winning Cymphonix technology addresses issues created by evolving web sites, web-based applications, and the growth of cloud computing.

[www.cymphonix.com](http://www.cymphonix.com)

## See For Yourself

See how Cymphonix can improve visibility, security, and efficiency of your Internet connection.



Contact your local technology reseller or Cymphonix for an online demonstration, technical documentation, case studies and pricing. Call 866.511.1155 or send an email to [sales@cymphonix.com](mailto:sales@cymphonix.com).